

La sicurezza inclusiva

Martina Zuliani – studentessa al dottorato in Studi etnici e delle Migrazioni.
Università di Lubiana.

Le sfide della sicurezza inclusiva e l'accomodamento ragionevole – 14/12/2017

Culture

collettiviste

vs

individualiste

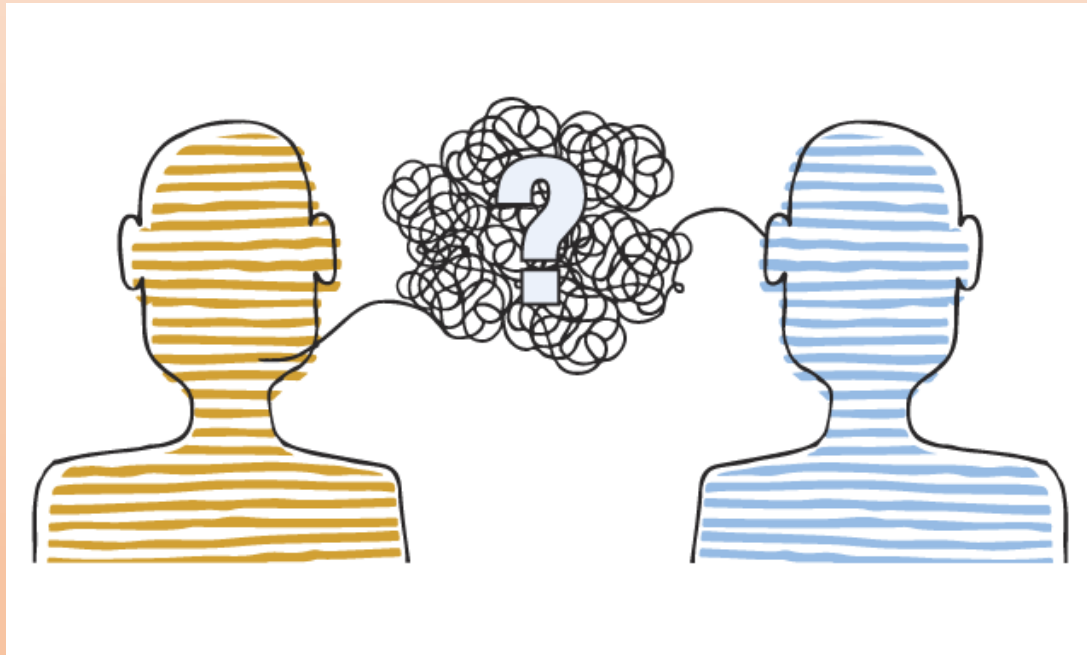
Relazioni

autoritarie

vs

“paritarie”

Le parole hanno lo stesso significato per tutti?



inshaallah

(noun)

a magical land where 99% of all Muslims promises, presence and punctuality is stored.



John F Nash

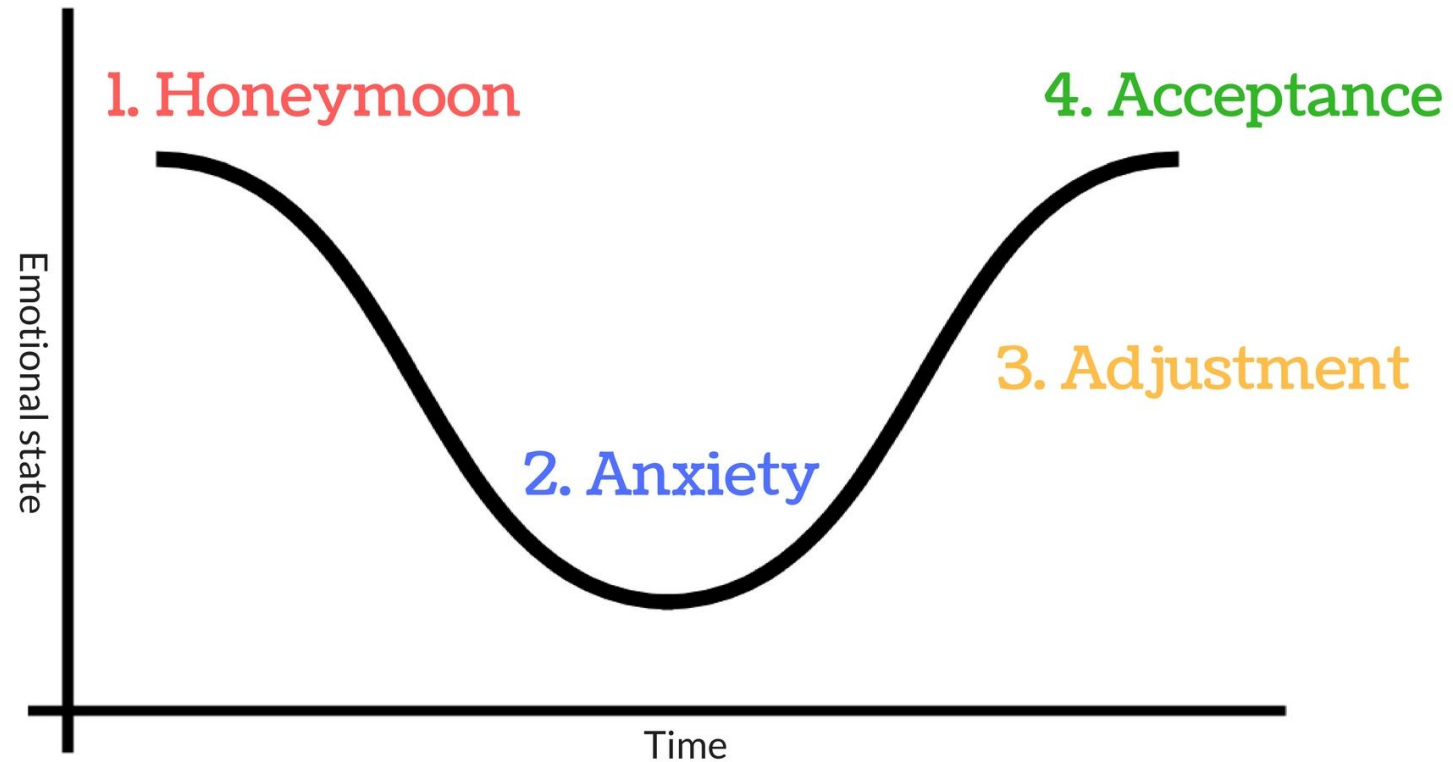
E i simboli?

COLORS <i>by Culture</i>							
ORANGE	BROWN	YELLOW	GREEN	BLUE	PURPLE	RED	BLACK
WESTERN Culture							
Harvest Warmth Affordable	Practicality Comfort Stability	Happiness Joy Caution	Luck Jealousy Greed	Depression Trust Calm	Royalty Spirituality Wealth	Love Danger Action	Intimidation Death Mourning
FAR EASTERN Culture							
Happiness Spirituality Adaptability	Earth Industrious Mourning	Masculinity Sacred Royalty	Fertility Hope Life	Feminine Healing Relaxation	Wealth Privilege Spirituality	Prosperity Good Fortune Vitality	Health Prosperity Stability
INDIAN Culture							
Sacred Courage Love	Mourning	Sacred Auspicious	Hope Harvest Virtue	Sports Strength	Sorrow Comfort Nobility	Beauty Wealth Power	Evil Darkness Negativity
MIDDLE EASTERN Culture							
Mourning Loss	Harmony Earth Comfort	Happiness Prosperity Mourning	Strength Fertility Hope	Mourning Heaven Spirituality	Wealth Virtue Royalty	Danger Caution Evil	Mystery Mourning Rebirth

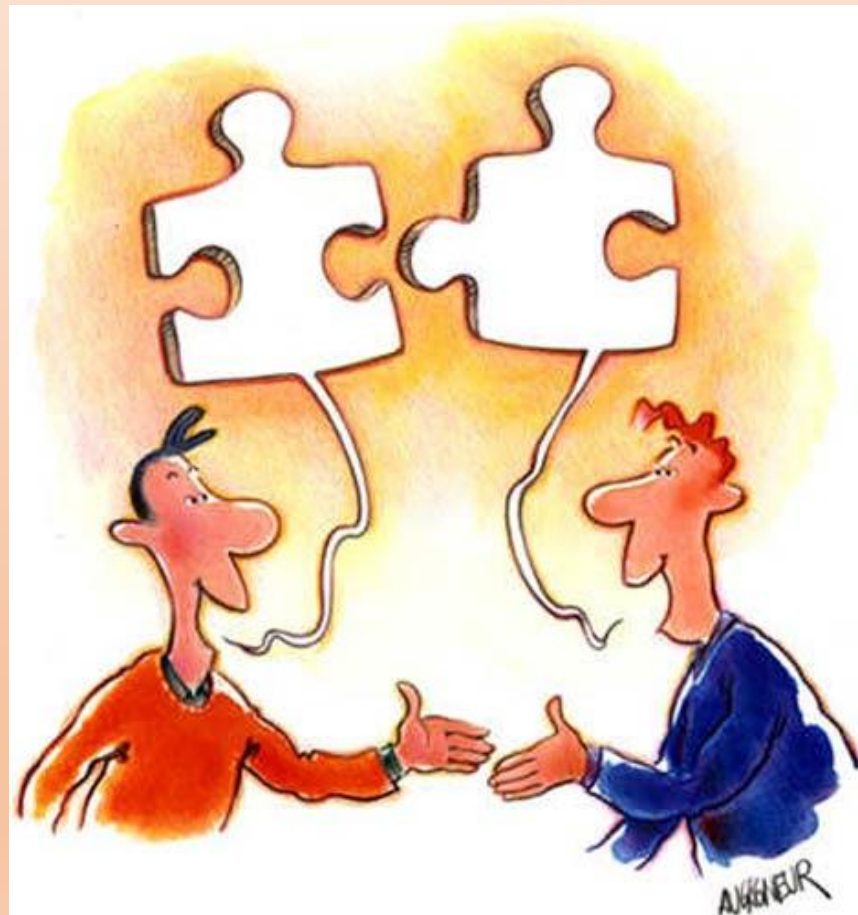


Lo shock culturale

Stages of workplace culture shock



Cosa fare?



Grazie

www.studiozuliani.net
zuliani.mar@gmail.com